



*Spring*

*Summer*

---

**C A L E N D A R**

---

**CONTINUING  
NURSING  
EDUCATION**

---

**Offering Education  
For Health Care  
Professionals**

---

Certificate Courses

Conferences

Self Study Courses

- Audio-CD Courses
  - Online Courses
- 

*Register online at [uwcne.org](http://uwcne.org)!*

## Spring/Summer 2012 Calendar

### APRIL

Apr 24-25 23<sup>rd</sup> Annual Pacific Northwest Ambulatory Care Nursing Conference

### MAY

May 10 Women's Health Drug Therapy  
 May 15 Immediate Response: Essential Skills for Urgent Clinical Situations  
 May 18 Adult/Geriatric Drug Therapy

### JUNE

Jun 8 Neuropsychotropic Drug Therapy  
 Jun 11 - Aug 19 Enhancing Medical-Surgical Nursing Practice—Summer 2012 Online Course  
 Jun 12 Annual Nurse Educators Conference 2012: The Art of Precepting  
 Jun 27-29 Assuring Pediatric Nutrition in the Hospital and Community

### JULY

Jul 26 17th Annual Nursing Ethics Conference: Navigating Difficult Patient-Provider Relationships

### AUGUST

Aug 15 - Oct 18 Wound Management Education Program—Summer/Fall Course  
*Application Deadline: June 15*  
 Aug 20 - Sep 22 Wound Management Fundamentals Course—Summer 2012 Course

### Upcoming in Fall 2012

*Dates are subject to change. Please check final course brochures or [uwcne.org](http://uwcne.org) to confirm dates.*

Sep 10-Nov 19 Enhancing Medical-Surgical Nursing Practice—Fall 2012 (Online Course)  
 Oct 4-6 Pacific Northwest 35<sup>th</sup> Annual National Conference on Advanced Practice in Primary & Acute Care  
 Oct 25-26 Update in Medical-Surgical Nursing  
 Nov 6 Immediate Response: Essential Skills for Urgent Clinical Situations  
 Nov 15-16 Update in Wound Management

Register online at [uwcne.org](http://uwcne.org)!



Get up-to-date information and register for our conferences and courses at [uwcne.org](http://uwcne.org).

Stay connected with UWCNE!



Find us on Facebook!  
 University of Washington  
 Continuing Nursing  
 Education



Follow us on Twitter!  
 @uwcne



Subscribe to our email list.  
 Email us at [cne@uw.edu](mailto:cne@uw.edu)

# SPRING CONFERENCES



## 23<sup>rd</sup> Annual Pacific Northwest AMBULATORY CARE NURSING CONFERENCE

April 24-25, 2012

Lynnwood Convention Center • Lynnwood

*Note: New location this year! See page 6 for address.*

13.3 contact hours • Both days: \$345/325\* • Single day: \$265/245\*  
Discounts for poster presenters and students are in the brochure.

This conference is a forum for nurses who practice in large and small clinics, physician offices, home health, long term care, public health, community health, occupational health, schools, college health, military health, specialty clinics, and other outpatient settings. Two general sessions and nine sets of concurrent sessions allow you to design a conference to meet individual needs. Topics address clinical issues across the lifespan, nursing interventions, and administration/management issues. Conference goals are to strengthen the practice of nursing, promote innovation, and create seamless systems for patients. Teaching methods include lecture, discussion, case studies, hands-on skill development, and collegial interchange. Poster presentations are invited (see conference brochure). Handouts for registrants will be available online to print prior to the conference.



## WOMEN'S HEALTH DRUG THERAPY

May 10, 2012 • Shoreline Conference Center • Seattle  
7.0 contact hours (7.0 R<sub>x</sub>) • Conference fee: \$245/225\*

This annual update focuses on current recommendations in drug therapy for women's health problems commonly seen in primary care. **Topics include:** Menorrhagia: pharmacologic and surgical options • Pharmacologic treatment of fibromyalgia in women • Pharmacology and current uses in metformin in women • Access to reproductive health medications • Caring for transgender people • Therapeutic options in treatment of inflammatory arthritis in women • Topics in women's mental health.



## IMMEDIATE RESPONSE Essential Skills for Urgent Clinical Situations

May 15, 2012 • Shoreline Conference Center • Seattle  
7.0 contact hours • Conference fee: \$265/245\*

In today's health care environment, patients are more acutely ill than ever before and clinical emergencies can arise rapidly. How quickly will you recognize a clinically-urgent situation and how will you respond? This conference is an annual opportunity to improve your skills for meeting the needs of patients experiencing acute and potentially life-threatening conditions.

R<sub>x</sub>=Pharmacology hours at the advanced practice level

\*Group rate—Please see page 6 for group rate eligibility.



## ADULT/GERIATRIC DRUG THERAPY

May 18, 2012 • Shoreline Conference Center • Seattle  
7.2 contact hours (7.2 R<sub>x</sub>) • Conference fee: \$245/225\*

This annual update on current recommendations in drug therapy for adult and geriatric health concerns. **Topics include:** Prescribing antipsychotics in a general practice • Metabolic syndrome • Sleep and insomnia in older adults • Pharmacological management of thyroid diseases • Approaches to resistant hypertension • Rheumatic disease update • Heart failure in older adults: A focus on diastolic heart failure.



## NEUROPSYCHOTROPIC DRUG THERAPY

June 8, 2012 • Shoreline Conference Center • Seattle  
7.2 contact hours (7.2 R<sub>x</sub>) • Conference fee: \$245/225\*

This annual update focuses on current recommendations in drug therapy for psychiatric and neurologic health problems. **Topics include:** Biopsychosocial connections: understanding psychopharmacology and neurophysiological basis of emotion and cognition • Appraising the evidence • Rare and serious side effects of medications • Psychopharmacology in autism spectrum disorders across the lifespan • Psychopharmacological interventions for eating disorder patients • Women of childbearing age and psychotropic medication choices • Treatment of combat-related post traumatic stress disorder.



## Annual Nurse Educators Conference 2012 THE ART OF PRECEPTING

June 12, 2012

Lynnwood Convention Center • Lynnwood  
7.0 contact hours • Conference fee: \$245/225

This conference focuses on practical approaches to precepting and on the role of experienced nurses in enhancing the skills of new colleagues. Whether you are an experienced or novice preceptor, an educator or a manager in charge of selecting and supporting preceptors, you will come away with interactive tools and creative techniques to add to your professional skill set. Conference methods include lecture, discussion, interactive participation and small group work.



## ASSURING PEDIATRIC NUTRITION IN THE HOSPITAL AND COMMUNITY

June 27-29, 2012 • UW Tower • Seattle  
20.0 contact hours • Conference fee: \$595/545\*

This intensive training program prepares registered dietitians to screen children for nutritional problems, assess specific nutritional needs, and develop interventions for children with nutritional problems and special health care needs. Speakers emphasize decision-making processes and the use of evidence-based practice. Teaching methods include lecture, interactive discussions, demonstration, and case-based learning. Upon completion of the course, participants are eligible to subscribe to the closed listserv, Pediatric Nutrition Consultation On-Line, which provides ongoing pediatric nutrition consultation and resources. Preregistration is required and enrollment is limited to facilitate interactive, small group learning experiences and promote development of clinical competencies.

# SUMMER CONFERENCE AND COURSES



## 17<sup>th</sup> Annual Nursing Ethics Conference NAVIGATING DIFFICULT PATIENT- PROVIDER RELATIONSHIPS

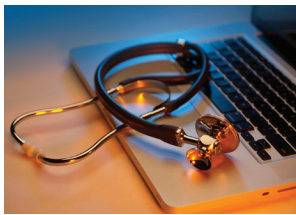
July 26, 2012

Shoreline Conference Center • Seattle

7.0 contact hours (1.0 R<sub>x</sub>) • Conference fee: \$245/225\*

Challenging patient-provider relationships present health care professionals with difficult choices related to patient care and interprofessional practice. This conference explores strategies for overcoming these challenges using approaches that respect the rights and vulnerabilities of patients and lead to more effective relationships and health outcomes. Teaching methods include lectures, case studies, discussion, and professional interchange.

**Topics include:** Difficult patient-provider relationships: What is the problem? • An ethics perspective on patient-provider relationships • Getting a better understanding of difficult patient-provider relationships • Challenging cases from our ethics committee: How relationships and resources guide resolution • The connection between access to care, limited resources, and patient-provider relationships • The power of the team.



## ENHANCING MEDICAL- SURGICAL NURSING PRACTICE—2012

*Improve Your Practice and  
Prepare for Certification*

### An ONLINE Course for Registered Nurses

Summer Course • June 11 - August 19, 2012

Fall Course • September 10 - November 19, 2012

Location: Online at [uwcne.org](http://uwcne.org)  
Credit: 50 contact hours  
Tuition: \$695.00

This online course provides a learning environment tailored to busy professionals who want to improve their practice and prepare for certification. Lectures on key topics in medical-surgical nursing are presented by expert clinicians. Teaching methods include lectures, handouts, reflective learning exercises, test-taking tips, practice tests, supplemental presentations, self-paced weekly assignments, and instructor guidance. The course is designed for registered nurses, including experienced medical-surgical nurses, nurse educators, ambulatory care and specialty care nurses, nurses in transition to new units and work settings, and nurses re-entering the nursing profession. For details, contact Shannon at [sbb82@uw.edu](mailto:sbb82@uw.edu), 206-221-4963.

\*Group rate—Please see page 6 for group rate eligibility.

R<sub>x</sub>=Pharmacology hours at the advanced practice level



## WOUND MANAGEMENT EDUCATION PROGRAM

### A Certificate Program for Registered Nurses

Summer/Fall Course • August 15 - October 18, 2012

*Application deadline is June 15, 2012.*

Location: Online (six weeks) and onsite at UW Tower in Seattle (three weeks).  
Credit: 130 contact hours  
Tuition: \$3795.00

This course is offered for registered nurses who seek advanced knowledge and skills in the management of chronic and complex wounds and who function well as independent learners. The program begins with six weeks of web-supported online learning followed by 14 weekdays (three weeks) of intensive classwork in Seattle with lectures, projects, testing, and clinical experience. Five precepted clinical days and clinical observations are arranged for each participant during the onsite phase of the course. For details, contact Nole Ann at [noleannah@uw.edu](mailto:noleannah@uw.edu), 206-221-2351.



## WOUND MANAGEMENT FUNDAMENTALS COURSE

### A Certificate Program for Healthcare Professionals

Summer Course • August 20 - September 22, 2012

Location: Online (four weeks): Aug. 20 - Sept. 16  
Onsite in Seattle: Sept. 20-22  
Credit: 30 contact hours (9 hours online/21 hours onsite)  
Tuition: \$595.00

**Limited enrollment. Preregistration required.**

Deadline: Register online by August 19.

Designed for nurses and other interested professionals in all settings including wound care team members, treatment nurses, staff nurses, and nurse managers in acute care, long term care, ambulatory care, and community-based settings. Content focuses on national wound management guidelines for a broad range of wounds (venous, arterial, neuropathic, pressure ulcers) and includes prevention, assessment, diagnosis, treatment, and evaluation of the healing process using fundamental principles and practical approaches to wound management. Preregistration is required and enrollment is limited to facilitate interactive, small group learning experiences, and promote development of clinical competencies. For details, contact Nole Ann at [noleannah@uw.edu](mailto:noleannah@uw.edu), 206-221-2351.

## PHARMACOLOGY—ONLINE & AUDIO-CDs (All contact hours are R<sub>x</sub>)

Self Study Course	Online Education	Audio-CDs
Clinical Pharmacology Series: 2011, 2010, 2009 Adult/Geriatric Drug Therapy • Neonatal Drug Therapy Neuropsychotropic Drug Therapy • Pediatric Drug Therapy Women's Health Drug Therapy	Entire course: 7.0-8.0 contact hrs \$195/\$175* Individual lectures: \$30 ea.	7.0-8.0 contact hours per course \$225/\$195* per course
Prescribing Scheduled Drugs: Honing Your Skills—2011 Edition!	10.0 contact hours • \$195/\$175*	N/A

## HIV/AIDS EDUCATION—ONLINE & AUDIO-CDs

Self Study Course	Online Education	Audio-CDs
HIV-AIDS Education: Implications for Nurses & Other Health Care Professionals (6 <sup>th</sup> Edition)	7.0 contact hours \$95	7.0 contact hours \$95
Routine HIV Screening in Health Care Settings	1.5 contact hours • Free	Not available on CD

## SELECTED TOPICS—ONLINE EDUCATION

Topic	Self Study Course	Contact Hours and Fees
Dementia	Dementia in Older Adults: Advances in Assessment and Treatment	7.5 contact hours • \$195
Depression	IMPACT: Online Training for Depression Care Management	17.5 contact hours Optional CE credit: \$50
Domestic Violence	Domestic Violence: Recognizing and Responding to Victims and Perpetrators in the Health Care Setting	2.0 contact hours • \$20
Ethics	Ethics as a Compass: A Model for Dealing with Complex Issues in Patient Care	7.7 contact hours • \$195
Geriatric Health	Geriatric Health Promotion: Lecture Series (52 Modules)	Entire course: 78.0 contact hours • \$460 Single module: 1.5 contact hours • \$30
Grand Rounds	UW Nursing Grand Rounds (New topic added quarterly at <a href="http://uwcn.org">uwcn.org</a> !)	Free to view • \$10 per contact hour
Hepatitis	Hepatitis Case Studies: Hepatitis A, B and C	Free to view • Free 0.5 contact hour per case study
HIV	See courses listed above.	
Pain	The Challenge of Pain—2010	14.0 contact hours (R <sub>x</sub> 8.0) • \$245
Pharmacology	See courses listed above.	
Presentation Skills	PowerPoint Tips for Health Care Professionals	Free to view • No contact hours
Public Health	Public Health Workforce Development Education and Training (Multiple topics)	Free to view Optional CE credit: \$35
Wound Academy	Wound Academy Course 1: Wound Assessment & Prep for Healing	4.3 contact hours • \$40
	Wound Academy Course 2: Lower Extremity and Pressure Ulcers	6.8 contact hours • \$60
	Wound Academy Course 3: Dressing Selection & Infection	2.5 contact hours • \$30
	Wound Academy Course 4: The Role of Collagen in Wound Healing	2.5 contact hours • \$30
Wound Care	Wound Assessment & Documentation	2.0 contact hours • \$60
Wound & Ostomy	Tubes & Drains: Techniques, Tips and Troubleshooting	2.0 contact hours • \$60



**Online Education:** View lectures on your computer, take an electronic post-test, and print your own certificate. Save time by choosing the online format. Register at [uwcn.org](http://uwcn.org)!



**Audio-CD Courses:** Receive a set of audio-CDs and a syllabus in the mail. Listen to the CDs, study the handouts, and return the post-test and evaluation. Upon successful completion, you will receive a certificate by mail. Register at [uwcn.org](http://uwcn.org)!

# GENERAL INFORMATION

## REGISTRATION INFORMATION

University of Washington  
Continuing Nursing Education (UWCNE)  
Box 359440, Seattle, WA 98195-9440  
206-543-1047 • FAX: 206-543-6953  
EMAIL: [cne@uw.edu](mailto:cne@uw.edu) • WEB: [uwcne.org](http://uwcne.org)

- **To Register:** Use one of the following three ways to register for a conference or self study course.
  - 1) Register online at [uwcne.org](http://uwcne.org).
  - 2) Complete and mail, fax, or scan the entire registration form to UWCNE.
  - 3) Call UWCNE at 206-543-1047.
- **Registration Fees:** Payment of registration fees must be in US funds and payable to the *University of Washington* via check, money order or credit card (VISA or MasterCard). Fees collected are estimated to cover the costs of conducting courses which include salaries, registration, program accreditation, handout materials, record keeping, facilities, planning, and evaluation sessions which may include a meal, taxes, and gratuities to vendors.
- **Group Rate:** Use the group rate per person when:
  - 1) Two or more registrations are submitted in the same envelope from the same agency; or
  - 2) An individual is registering at the same time for two or more conferences and/or independent study courses; or
  - 3) An individual is employed by an organization or agency which is listed on the conference brochure as a cosponsor.
- **Refund Policy:** Registration fees are refunded upon written request received prior to each conference. A minimum fee is assessed for cancellations to cover processing expenses. Check the individual conference or course brochure for applicable refund policy, cut-off date, and fee.

## PROFESSIONAL CREDIT

### Nurses:

- The University of Washington School of Nursing (UWSON) is accredited as a provider of continuing nursing education by the American Nurses Credentialing Center's Commission on Accreditation.
- The UWSON is approved as a clock hour provider by the Washington State Board of Education.
- Provider is approved by the California Board of Registered Nursing, Provider #07218.

**Psychologists:** The UWSON qualifies as a Washington State CE program sponsor under the Washington administrative code, WAC 246-924-240(1).

**Social Workers and Counselors:** The UWSON qualifies as a Washington State CE program sponsor under the Washington administrative code, WAC 246-810-620.

**All Disciplines:** A certificate of contact hours earned will be awarded to all participants to document completion of each educational offering.

## ADDRESS CHANGES

Please email UWCNE of your new address since the post office will not forward brochures: [uwcne@uw.edu](mailto:uwcne@uw.edu)

## COURSE INFORMATION

A detailed brochure with learning objectives, program schedule, speaker list, cosponsors, planning committee, and registration information is available for each offering. Visit [uwcne.org](http://uwcne.org) for current brochures and to join our mailing list.

## COURSE CHANGES/CANCELLATION

Be sure to check the *final* course brochure for course hours and location. UWCNE reserves the right to change course location and course hours or to cancel a course when minimum enrollment is not met. In the event of cancellation, registration fees are automatically refunded in full. Costs incurred by a registrant such as airline or hotel penalties are the responsibility of the registrant.

## CONFERENCE LOCATION

Check the conference listing for its location. Directions and parking information will be sent with confirmation of your registration. Addresses of frequently used locations are:

- Shoreline Conference Center—18560 1st Ave NE, Seattle 98155
- UW Tower—4333 Brooklyn Ave NE, Seattle 98105
- Lynnwood Convention Center—3711 196th St. SW, Lynnwood 98036

## EXHIBITOR INFORMATION

Visit the Exhibitor Portal at [uwcne.org/exhibitors](http://uwcne.org/exhibitors) to reserve exhibit space at a conference. For more information, contact Corie Goodloe at [corie@uw.edu](mailto:corie@uw.edu) or 206-616-3826.

## EMERGENCY/WEATHER ALERTS

In case of inclement weather or community emergency, please check our website at [uwcne.org](http://uwcne.org) under "Announcements" or call 206-543-1047.

## MAILING LIST AND EMAIL LIST

To be added to the UWCNE mailing list, please complete the interest form on the next page or register online at [uwcne.org](http://uwcne.org).

## CHILD CARE

In consideration of other participants, please make alternative childcare arrangements for your infant or child.

## ACADEMIC PROGRAMS

For information about academic programs at the UW School of Nursing (UWSON), please call 206-543-8736, 1-800-759-NURS, email [sonas@uw.edu](mailto:sonas@uw.edu), or go online at [nursing.uw.edu](http://nursing.uw.edu).

## UW SCHOOL OF NURSING ALUMNI

Knowing more about our alumni and their careers is important when demonstrating the quality of the programs at UWSON. To help the school demonstrate its value to the community and compete for foundation grants and other funding, please update your employment information under "Alumni and Friends" online at [nursing.uw.edu](http://nursing.uw.edu) or call Chris Miller at 206-221-7674.

## DISABILITY ACCOMMODATIONS

The University of Washington is committed to providing access, equal opportunity and reasonable accommodation in its services, programs, activities, education and employment for individuals with disabilities. To request disability accommodation, contact the Disability Services Office at least ten days in advance of the conference at: 206-543-6450/V, 206-543-6452/TTY, 206-685-7264 (FAX), or [dso@uw.edu](mailto:dso@uw.edu).

## SUBMIT A PRACTICE EXAMPLE!

Please tell us how a particular conference, lecture, speaker, or online course has made a difference to your work or personal/professional life. Submit a short "Practice Example" at [uwcne.org](http://uwcne.org). Submissions are very helpful to our presenters, planning committees, and program evaluation. Thank you for sharing your stories with us!

Complete and return to:

**UW Continuing Nursing Education**

Box 359440 • Seattle, WA 98195-9440

206-543-1047 • FAX 206-543-6953 • WEB: Register at uwcne.org

PLEASE PRINT/TYPE CLEARLY:

NAME \_\_\_\_\_

ADDRESS \_\_\_\_\_

CITY \_\_\_\_\_ ST \_\_\_\_\_ ZIP \_\_\_\_\_

AGENCY \_\_\_\_\_

AGENCY CITY & STATE \_\_\_\_\_

EMAIL \_\_\_\_\_

DAYTIME PHONE \_\_\_\_\_

**YOUR HIGHEST DEGREE**

- Nursing Diploma
- Associate Degree in Nursing
- Baccalaureate in Nursing
- Masters in Nursing
- Doctorate
- Other \_\_\_\_\_

**YOUR PRIMARY POSITION**

- Staff Nurse
- Nurse Practitioner
- Clinical Nurse Specialist
- Certified Nurse Midwife
- Nurse Educator
- School Nurse
- Manager/Administrator
- Nurse Researcher
- Physician Assistant
- Social Worker/Counselor
- Other \_\_\_\_\_

**MAILING LIST**

Please check all that apply. Write your email above if needed.

- Add me to the UWCNE email list to receive electronic notices of upcoming conferences and other offerings.
- My email address has changed. Update my email to the one on the right.
- Add me to the mailing list to receive print brochures.
- My address has changed. Update my address to the one on the right.
- Please delete me from the print mailing list. I prefer just to get email.
- Please delete me from the email list and print mail list.

**SPRING/SUMMER 2012 COURSES AND CONFERENCES\***

	<u>Individual Rate</u>	<u>**Group Rate</u>
Foot Care for Older Adults, Apr 13 .....	<input type="checkbox"/> \$245	<input type="checkbox"/> \$225
Ambulatory Care Nursing, Apr 24-25, <input type="checkbox"/> Both days <input type="checkbox"/> Tues <input type="checkbox"/> Wed.....	<input type="checkbox"/> \$345 <input type="checkbox"/> \$265	<input type="checkbox"/> \$325 <input type="checkbox"/> \$245
Women's Health Drug Therapy, May 10 .....	<input type="checkbox"/> \$245	<input type="checkbox"/> \$225
Immediate Response, May 15 .....	<input type="checkbox"/> \$265	<input type="checkbox"/> \$245
Adult/Geriatric Drug Therapy, May 18 .....	<input type="checkbox"/> \$245	<input type="checkbox"/> \$225
Neuropsychotropic Drug Therapy, Jun 8 .....	<input type="checkbox"/> \$245	<input type="checkbox"/> \$225
Art of Precepting, Jun 12 .....	<input type="checkbox"/> \$245	<input type="checkbox"/> \$225
Assuring Pediatric Nutrition in the Hospital and Community, Jun 27-29 .....	<input type="checkbox"/> \$595	<input type="checkbox"/> \$545
Navigating Difficult Patient-Provider Relationships, July 26 .....	<input type="checkbox"/> \$245	<input type="checkbox"/> \$225
Wound Management Education Program, Aug 15-Oct 18 .....	Visit uwcne.org for application.	
Wound Management Fundamentals Program, Aug 20-Sep 22 .....	Visit uwcne.org for application.	
Enhancing Medical-Surgical Nursing Practice—Online, Sep 10-Nov 19 .....	Register at uwcne.org	

**SELF STUDY COURSES**

 **CD Format** (Register below or online.)



**Online Format** (Register online at uwcne.org.)  
See page 5 for list of available online courses.

**Clinical Pharmacology Series**

	<u>Individual Rate</u>	<u>**Group Rate</u>
Adult/Geriatric Drug Therapy..... <input type="checkbox"/> 2011.... <input type="checkbox"/> 2010... <input type="checkbox"/> 2009 .....	<input type="checkbox"/> \$225	<input type="checkbox"/> \$195
Neonatal Drug Therapy .....	<input type="checkbox"/> \$225	<input type="checkbox"/> \$195
Neuropsychotropic Drug Therapy..... <input type="checkbox"/> 2011.... <input type="checkbox"/> 2010... <input type="checkbox"/> 2009 .....	<input type="checkbox"/> \$225	<input type="checkbox"/> \$195
Pediatric Drug Therapy..... <input type="checkbox"/> 2011.... <input type="checkbox"/> 2010... <input type="checkbox"/> 2009 .....	<input type="checkbox"/> \$225	<input type="checkbox"/> \$195
Women's Health Drug Therapy .....	<input type="checkbox"/> \$225	<input type="checkbox"/> \$195
HIV/AIDS: 6 <sup>th</sup> Edition.....	<input type="checkbox"/> \$ 95	

\*Please confirm times and locations by checking the printed brochure or going to our website, uwcne.org.

\*\*Group Rate: See group rate eligibility under General Information/Registration Information/Group Rate.

**TOTAL PAID** \$ \_\_\_\_\_ (U.S. Funds)

- Check enclosed payable to: *University of Washington*
- Purchase order or letter of authorization enclosed. Please bill my agency.
- UW Budget # \_\_\_\_\_ Budget Name: \_\_\_\_\_
- Charge my bank card:  VISA  MC

Acct # \_\_\_\_\_ Exp. Date: \_\_\_\_\_